

OFFERS OVER

£369,000

Greystone Gardens
Strathaven, ML10 6FT

PROPERTY SUMMARY

Nicely positioned at the end of the quiet, child friendly cul de sac of Greystone Gardens is this attractive, modern, detached, four-bedroom family home. This beautifully presented property offers spacious and versatile accommodation over two levels, with fully enclosed gardens providing a high level of privacy. Conveniently located close to excellent local schooling this lovely villa offers the opportunity to acquire a fabulous family home within an established, small, family development.

The flexible layout of apartments comprises; welcoming reception hallway with under-stairs storage, two-piece cloaks/wc, stunning formal lounge with media wall and feature fireplace, modern fitted kitchen with integrated appliances and breakfasting bar open plan to dining space and living area conducive with modern family living. Accessed via the kitchen is a generous apartment which the current owners are utilising as a playroom/family room. Also at ground level is a utility room with rear access, and gym with access to useful storage area.

Accessed via a light and airy landing are four, well-proportioned bedrooms three of which benefit from fitted wardrobes, the master bedroom with the luxury of its own modern, en-suite, shower room. Completing the first-floor

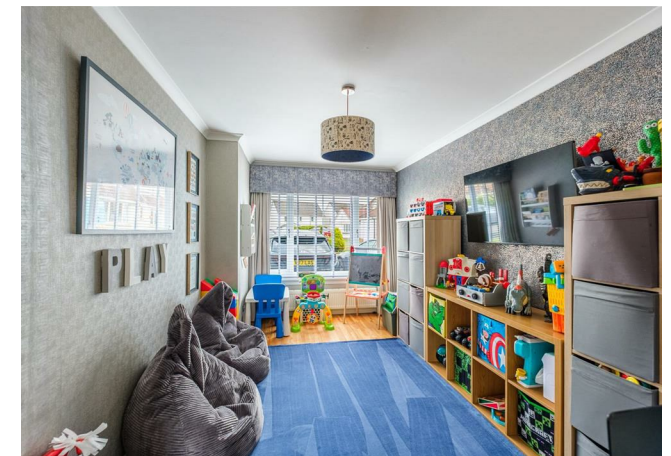
4



2



3









LOCAL AUTHORITY

South Lanarkshire

TENURE

Freehold

COUNCIL TAX BAND

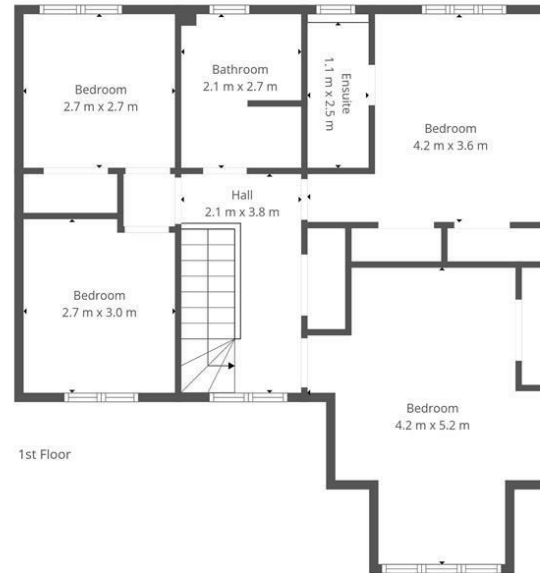
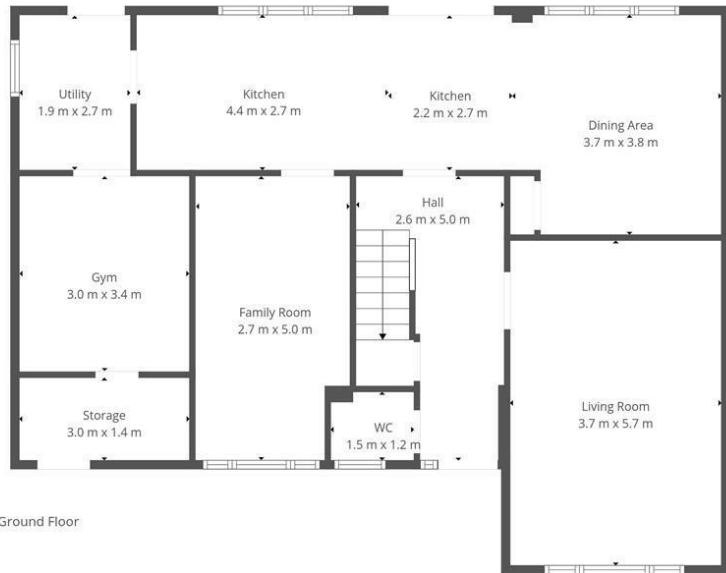
G

VIEWINGS

By prior appointment only

| Energy Efficiency Rating | | Current | Potential |
|--|--|----------------------------|-----------|
| <i>Very energy efficient - lower running costs</i> | | | |
| (92 plus) A | | | |
| (81-91) B | | | |
| (69-80) C | | | |
| (55-68) D | | | |
| (39-54) E | | | |
| (21-38) F | | | |
| (1-20) G | | | |
| <i>Not energy efficient - higher running costs</i> | | | |
| Scotland | | EU Directive 2002/91/EC | |

Agents Note: Whilst every care has been taken to prepare these particulars, they are for guidance purposes only. All measurements are approximate and are for general guidance purposes only and whilst every care has been taken to ensure their accuracy, they should not be relied upon and potential buyers/tenants are advised to recheck the measurements



This Floorplan Is Intended To Give An Indication Of The Layout Only.



OFFICE ADDRESS
9 Townhead Street
Strathaven
ML10 6AB

OFFICE DETAILS
01357 510088
judithmcgill@cruive-
estateagents.co.uk